

FMT

SmartFill

Fuel accounting has never been easier, with instant reconciliation, even across multiple sites



CLOUD BASED TECHNOLOGY | NO ONGOING COSTS

The World's Most Functional Fuel Management System

Our three design principles keep fuel flowing and ensure that every drop is recorded to make accounting and fuel management easy.

A robust system you can rely on.

SmartFill GEN 3 is a cloud-based solution, allowing you to access your data for free using our SmartFill Web Portal - available on any web browser.

FREE
online access
is available for
your data



**CLOUD
BASED
TECHNOLOGY**

**NO
ONGOING
COSTS**

**NO
PC SOFTWARE
NEEDED**



Upgrade to PRO Reports

Our global customers enjoy the ease of fully automated fuel reports, custom dashboards and real-time tank monitoring. Save time and resources by simplifying your fuel management and reporting processes.

DASHBOARD

Master your fuel data in real time and drill down where needed or create an instant report.

MULTIPLE PRE-CONFIGURED REPORTS

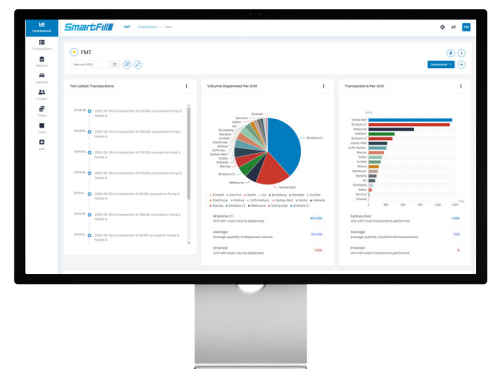
Simplify your reporting workload with 6 detailed, pre-configured reports.

EMAIL SCHEDULE

Set up which reports you want to receive and have them automatically emailed to you daily, weekly or monthly.

VIRTUAL TANKS

Don't have tank gauging in your tanks? No hardware necessary, use our system to track fuel in your tanks.





NETWORKED COMMUNICATIONS – 3G/4G, WIFI, ETHERNET

Networked communications keep your records up-to-date in real-time. Your data is always available and you don't need any special software to access it. USB access on the front of the panel provides access to data if you do not have a communication network.

ELECTRICAL ROBUSTNESS

Designed to deal with unstable power sources, such as generators, truck systems and environments with high levels of electrical noise.

ENHANCED SECURITY

Access to fuel by vehicle and/or driver can be restricted by preselected times (such as from 9am to 5pm) and/or volume (such as a maximum of 2,000 litres).

EASY TO USE, EASY TO SET UP

Configuring the unit is menu based, eliminating the need to enter excessively long codes or numbers.

TOUGH ON THE OUTSIDE

Housed in a tough, automotive grade nylon resin, weatherproof enclosure for use in all weather conditions outdoors. Enclosure rating is IP66 Tested temperature range -40C to 85C and microparticle proof rubber seals stop dust, insects, moisture and water from entering the unit. Multiple gaskets further enhance protection.

SMART ON THE INSIDE

Easy to service the unit with Click-in and Click-out modules. Each is clearly marked and can only fit in one place. No need for special technical or electrical skills.

SMART ACCESS

Near Field Communications for easy user or vehicle identification, with long lasting proximity cards and fobs. You also have flexibility to gain the data you want, and how you want it. Access can also be provided via PIN, iButton key and VIN (Vehicle Identification Number), or AVID (Automatic Vehicle Identification).

Summary of Benefits

- Data can be accessed online, with no need for special software (and it's FREE to use!)
- Modular design allows for rapid installation and repair
- Click-in and click-out design requires no special technical skills
- Control up to 4 fuel/oil dispensers, all delivering simultaneously
- Electronic control of up to 8 hoses on Gilbarco, Wayne, Compac, Bennett, TT and Tatsuno dispensers
- Records fuel use for in excess of 50,000 vehicles
- Records the past 20,000 fuel issues in memory for superior offline data storage
- Secure your fuel with access controlled by secure vehicle keys and driver PINs
- Restrict fuel usage by volume per vehicle/ driver and/or time
- All data is stored securely in the unit and can be automatically uploaded to a secure website after each transaction
- Multiple communication options available for uploading data to the website via secure SSL/TLS: WiFi, 3G/4G and Ethernet
- Large, easy to read outdoors, colour 7" Blanview LCD display
- Can be configured and is continuously monitored remotely via the website
- The system can be used as a 'preset' delivery system. This is ideal for lube trucks or workshop lube dispensing systems
- Compatible with all major fuel bowsers and bulk flow-meters
- Housed in a tough, weatherproof enclosure. High quality lock and stainless steel door hinges for use in all weather conditions outdoors. Enclosure rating is IP66
- Proven reliability around the world in extreme hot, cold, dusty, windy and salty environments
- Extensive professional network of support
- Optional interface to other tank gauging systems such as Veeder Root, OPW and Franklin Fueling
- We take data security seriously with SSL/ TLS encryption, PCI Compliance and optional two-factor authentication (2FA).
- Optional integrated tank gauging is available with SmartDip - view tank levels online or with SMS

Fuel Authentication Technologies

Choose the way that suits your process for people to access fuel

AUTOMATIC VEHICLE

SmartTag IDENTIFICATION

SmartTag is cost effective for rapid deployment across the entire fleet, with unobtrusive, easy-to-install RFID tags. Engineered to thrive in diverse environments, from utes to mining trucks to boats, this cutting-edge solution ensures reliable performance across the board.

Reports and Data

Automatically available via a web browser anywhere, anytime.



SmartFill GEN 3

The hub of 100% reliable fuel data and reporting with flexible authentication.



SMARTFILL IButton READER WAND

Improves cost savings and data integrity by:

- Minimising misuse / swapping / loss / theft of keys.
- Easily installed to existing or new systems.
- Uses a very strong, long life, fuel resistant coiled cable.
- Cable length is approx 1.8M stored and 5.4M extended.
- The tag mounts to the vehicle with 2 screws or rivets, plus you can use strong glue etc if required.



NFC FOBs AND CARDS

Easy user or vehicle identification is provided with long lasting NFC fobs or proximity cards.



MAGNETIC SWIPE CARDS

Utilise your existing fuel cards as user ID. Simply swipe to access fuel. Our magnetic card readers are the toughest available, with an IP67 rating, they are dust and waterproof.



HID CARD READER

Use existing employee access control cards to identify who has taken fuel and when.



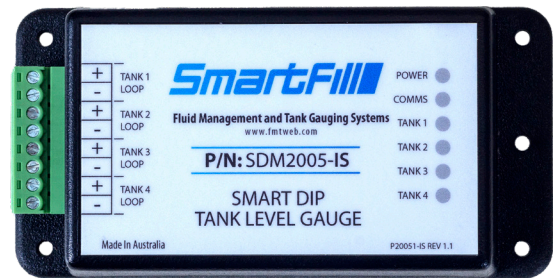
SmartDip Tank Gauging with Online Reporting and SMS

A simple, foolproof design, with the affordability to match

When you combine SmartDip with SmartFill GEN 3, you have a complete fuel management and reporting system in just one unit, to report, record, measure and alert about fuel use and levels.

The SmartDip system is a simple and reliable design for people who require a functionally accurate system for re-ordering and basic stock control.

SmartDip monitors up to four tanks. It is suitable for most non-flammable liquids such as diesel, with densities ranging from 0.500 to 60 kg/m³. Densities can be changed by the user in case of product type changes.



The SmartDip module

Ease of mind with an alarm system that is set for your needs

SmartDip has a low/high level alarm for each tank that can be set by the user. Alarm notifications can be sent via email or SMS.

Tank levels can be viewed on a unit next to the tank, accessed online in real-time and can also be sent via SMS on demand or at a preset time of day.



Onsite

Online

Via SMS

Customer Testimonials

American Airlines 

American Airlines chooses SmartFill at JFK airport for 600 vehicle fleet. Reconciliation of fuel accounts are now fully automatic, covering 4,930 acres.

"Since we switched to the SmartFill, product reconciliation has never been easier. Gone are the days of needing a third party and a lot of time and effort to get the accounts right.

"Now it's automatic. All of the fuel data across JFK for our fleet of 600 vehicles gets put into an Excel spreadsheet and we are good to go."

David Richards
American Airlines



"Marano's Fuel supplies petroleum products throughout the Far North of Queensland, delivering to remote communities from Townsville to the Tip of Cape York Peninsula.

We love the new SmartFill Fluid Management System for its ability to allow us to manage multiple sites from one central location. It is accurate and records real-time data, allowing us to provide quick and reliable information to manage our business.

The SmartFill system has given us the ability to install tanks in remote locations and monitor our tank capacities and sales automatically, without the need to go anywhere near the site except to refill tanks.

Their hardware is of a high quality construction and adapts neatly into our sites. They have developed a reliable product with excellent back up support, with a professional organized team. Our company will continue to use the SmartFill Fluid Management Systems into the future."

Gordon Berzinski
Operation Coordinator, Marano's Fuel

Georgiou 

"Smart Fill has automated the whole process. It orders fuel to our inventory, it records fuel usage to the job and it tracks the equipments' fuel use onsite, including hire equipment. This system saves a lot of man hours, and with fuel prices in the current economy, it's good to know we can monitor and account for every single drop."

Cameron Towie
Equipment Manager, Georgiou Group

A World of Applications in the Toughest Environments



Mining

Throughout Australia and the world, SmartFill GEN 3 controls and records the hundreds of millions of litres of fuel needed every day to mine and process everything from coal to gold.



Service Vehicles

With auto power off and battery isolation, the system has been specifically designed for service truck use.



Civil Construction

Handles extreme weather conditions from minus 25 to plus 55 degrees in isolated areas.



Municipalities

Even in the most isolated areas, theft is prevented and every drop of fuel used is recorded.



Marinas

Specifically designed for the harshest of environmental conditions, SmartFill GEN 3 stands the test of time and tide in Marinas.



Transport

All data is captured online in real-time for easy accounting and control of small to large fleets.