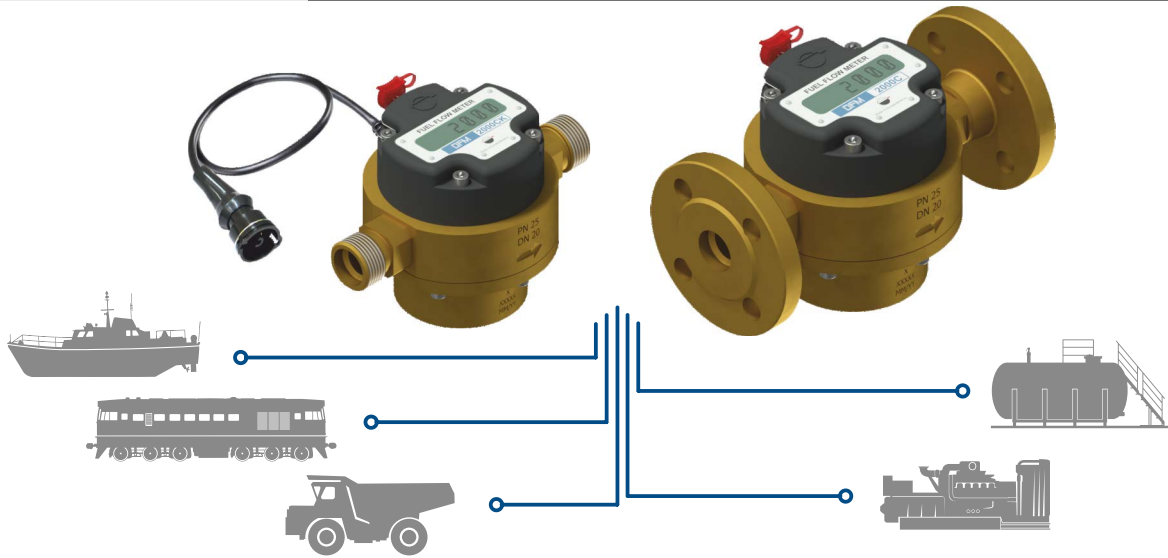
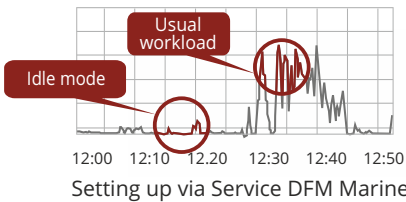
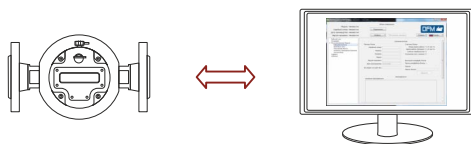




# DFM Marine fuel flow meter



**DFM Marine measures engine fuel consumption and operating time of engines, boilers/burners, defining fuel consumption in different operation modes.**



## Diagnostics

- Instant fuel consumption chart
- Event log: tampering, interference, ignition ON/OFF, low/high level of supply voltage
- Fuel temperature
- Self-diagnostics code



## Setting up

- Operation modes boundaries
- Temperature correction coefficient
- Switching on/off display of particular screens
- Units of measure: metric/us

## Counters

Information shown on DFM Marine display:

- hourly fuel consumption;
- total fuel consumption;
- total operating time;
- engine operating time in idle mode;
- engine operating time in optimal mode»;
- engine operating time in overload mode.

Digital interfaces contain fuel consumption data on **idle**, **optimal** and **overload** modes of engine.

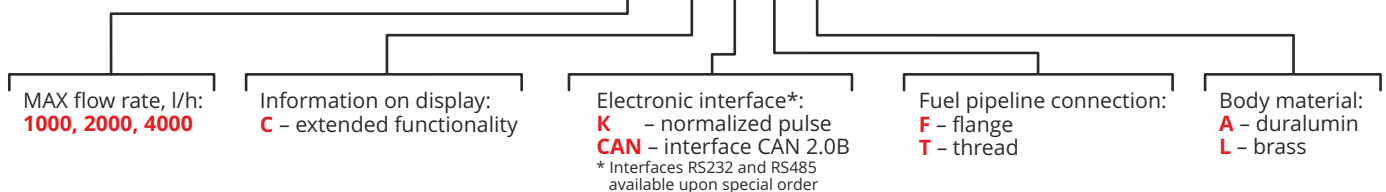
## Features

- Data transfer protocols ..... SAE J1939 and NMEA 2000
- MAX pressure:
  - flange connection ..... 25 bar
  - connection thread ..... 16 bar
- Viscosity of working fluid ..... 1,5 - 6,0 mm<sup>2</sup>/s (cSt)
- Operating temperature ..... - 40 .. +60/150 °C \*
- Measuring chamber material ..... brass
- Inaccuracy rate\*\* ..... ± 0,5 %

\* Special model on request

\*\* For fuel consumption up 50 L/h inaccuracy rate is possible up to ± 1%

## Marking DFM 4000 C K F A



phone +375 17 240 39 73  
 Telegram/ Viber/ WhatsApp +375 44 792 67 58  
 e-mail: sales@technoton.by  
 www.jv-technoton.com

