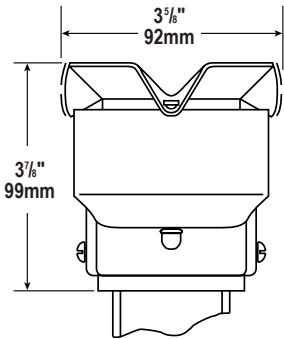


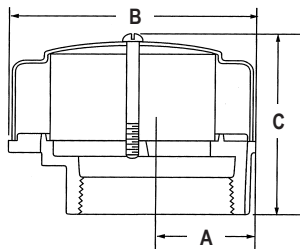
OPW 23 Series Open Atmospheric Vents

Open Atmospheric Vents are installed on the top of vent pipes from underground or above ground fuel storage tanks. The vent cap and internal wire screen are designed to protect the tank vent lines against intrusion and blockage from water, debris or insects. These vents are always open to atmosphere and allow any pressure or vacuum into the tank to vent.



OPW 113 Series Open Atmospheric Utility Vents

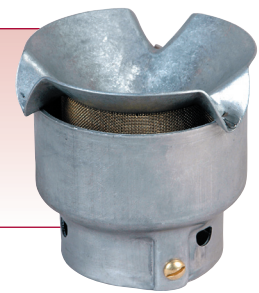
OPW 113 Open Atmospheric Utility Vents are installed on the top of above ground fuel storage tanks. The vent cap and internal wire screen are designed to protect the tank vent lines against intrusion and blockage from water, debris or insects. These vents are always open to atmosphere and allow any pressure or vacuum into the tank to vent. The 113 vents vapors downward and is used primarily on diesel, fuel oil, waste-oil and motor-oil tanks, but can also be used on a wide variety of above ground storage tank venting applications.



Materials

Body: Aluminum
Screen: 40-mesh brass
Set Screws: Brass

23



Features

- ◆ **Reliable Service** – vent cap drain spouts extend outward to deter rainwater entry.
- ◆ **Corrosion-Resistant Construction** – aluminum body and cap assure a long service life.
- ◆ **Easy Installation** – 23 series is available in 2" and 3" slip-on models that provide for attachment to the vent line with set screws.
- ◆ **Complies with NFPA 30 Requirements** – for venting gasoline vapors upward.
- ◆ **High-Maximum Flow Rate** – 7000 SCFH at 2 psi (0.14 bar) pressure drop.
- ◆ **40-Mesh Brass Wire Screen** – Helps prevent debris and insects from entering the tank vent lines.

Ordering Specifications

Product #	in.	mm	oz.	kg	Description
23-0044	1½	38	3.8	.11	Open Vent
23-0033	2	51	4.3	.12	Open Vent
23-0055	3	76	5.0	.14	Open Vent

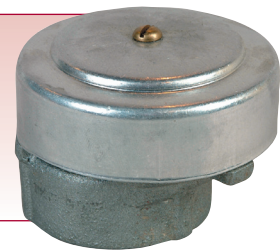
Replacement Parts

Part #	Description
H00122M	Screw
H01967M	Nut
H01969M	Screen

Materials

Body: Zinc/aluminum
Screen: brass
Cap: 2" - Steel 4" - cast iron
Screen: 40-mesh stainless steel

113



Ordering Specifications

Product #	in.	mm	lbs.	kg
113-0066	2	51	.88	.40
113-0099	4	102	7.50	3.41

Dimensions

	2" (51mm)		4" (102mm)	
	in.	mm	in.	mm
A	1½	38	2¼	70
B	3¾	95	7⅞	189
C	2¾	70	4⅞	125